

DANAHERLAGNESE, PC

ATTORNEYS AT LAW

Our bench of experienced trial lawyers just got deeper.

DanaherLagnese, PC is pleased to announce that Laura E. Waltman, Thomas J. Plumridge and April H. Rosenkrantz have become principals with the firm. We are also excited to welcome three new associates, Carolyn E. Ruth, who will work primarily in our Westport office and Ethan P. Suraci and Marc G. Bernatchez, both of whom will work in our Hartford office.



Laura E. Waltman
Principal



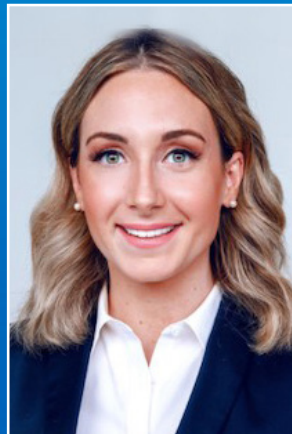
Thomas J. Plumridge
Principal



April H. Rosenkrantz
Principal



Ethan P. Suraci
Associate



Carolyn E. Ruth
Associate



Marc G. Bernatchez
Associate

**DECADES OF EXCEPTIONAL RESULTS THROUGH INGENUITY,
DETERMINATION AND CLIENT COLLABORATION.**

21 Oak Street, Suite 700 Hartford, CT 06106 | 274 Riverside Avenue, First Floor Westport, CT 06880
(860) 247-3666 | www.danaherlagnese.com